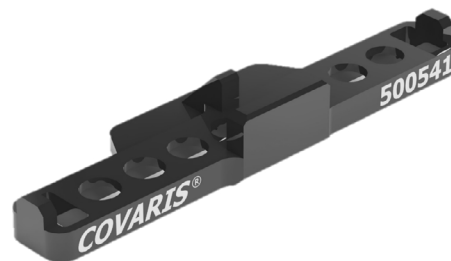


Product Insert: Centrifuge 8 microTUBE Strip V2 Adapter

Introduction

The Centrifuge 8 microTUBE Strip V2 Adapter ([PN 500541](#)) is designed for the 8 microTUBE V2 products and is compatible with the ThermoFisher™ Scientific mySPIN™ 12 mini centrifuge. There are two adapters included with [PN 500541](#). The mySPIN 12 mini centrifuge comes with 2 rotors: one for separate centrifuge tubes and one for PCR strip tubes. This adapter works with the PCR strip tube rotor.



Covaris recommends always centrifuging the 8 microTUBE-15 AFA Bead Strip V2 products. Centrifuging the other 8 microTUBE Strip V2 products when they are used at their recommended volumes is not required.

Never centrifuge a single 8 microTUBE Strip V2. Always centrifuge two to maintain balance. Ensure the 8 microTUBE Strip V2s are fully seated in the adapter prior to spinning.

Ordering Information

- Centrifuge 8 microTUBE Strip V2 Adapter (quantity 2) ([PN 500541](#))

Compatible Covaris Consumables

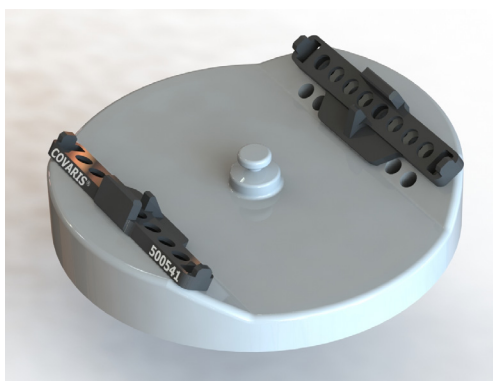
- 8 microTUBE-15 AFA Beads Strip V2 (12) ([PN 520159](#))
- 8 microTUBE-15 AFA Beads H Slit Strip V2 (12) ([PN 520241](#))
- 8 microTUBE-50 AFA Fiber Strip V2 (12) ([PN 520174](#))
- 8 microTUBE-50 AFA Fiber H Slit Strip V2 (12) ([PN 520240](#))
- 8 microTUBE-130 AFA Fiber Strip V2 (12) ([PN 520217](#))
- 8 microTUBE-130 AFA Fiber H Slit Strip V2 (12) ([PN 520239](#))

Operational Requirements

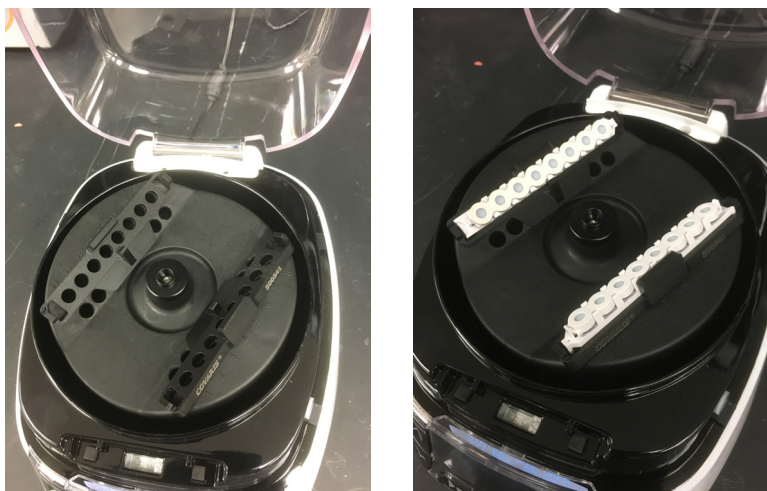
Operation	Name	Part number
Compatible centrifuge model	ThermoFisher™ Scientific mySPIN™ 12 mini centrifuge	75004081
Centrifuge Rotor Type	Strip Tube Rotor (included with centrifuge)	HS100504
Centrifuge Speed	300 RCF maximum	N/A

Installation Instructions

- Review the Rotor Installation and Removal section of the centrifuge manual. Remove the Strip Tube Rotor (HS100504) and place flat on a bench top.
- Firmly press the adapter into the middle four holes in the row closest to the finger nut in the center of the rotor. Repeat on the opposite side of the rotor. The adapters should fit tightly and sit flush to the bottom.



3. Following the Rotor Installation and Removal section of the centrifuge manual, reinstall the rotor into the centrifuge.
4. Load 8 microTUBE Strips V2 into adapters and ensure they are fully seated prior to spinning.



5. Follow instructions provided in manual or protocol for spinning speed and time. The 8 microTUBE-15 AFA Beads Strip V2 should be spun for a minimum of 1 minute.

Technical Assistance

Ongoing assistance with the operation or application of the equipment and/or troubleshooting is provided via:

- Telephone
 - United States: Tel: +1 781.932.3959 during the hours of 9:00 a.m. to 5:00 p.m., Monday through Friday, Eastern Standard Time (EST), Greenwich Mean Time (GMT-05:00)
 - Europe: Tel: 44 (0) 845 872 0100, during the hours of 9:00 a.m. to 5:00 p.m., Monday through Friday, Greenwich Mean Time
- E-mail queries to techsupport@covaris.com or applicationsupport@covaris.com

Revision History

Document Part #	Revision	Date	Description of change
010378	A	11/2016	Initial release
010378	B	6/2020	Updated document template. Addition of consumables.
010378	C	10/2020	Update hyperlinks